

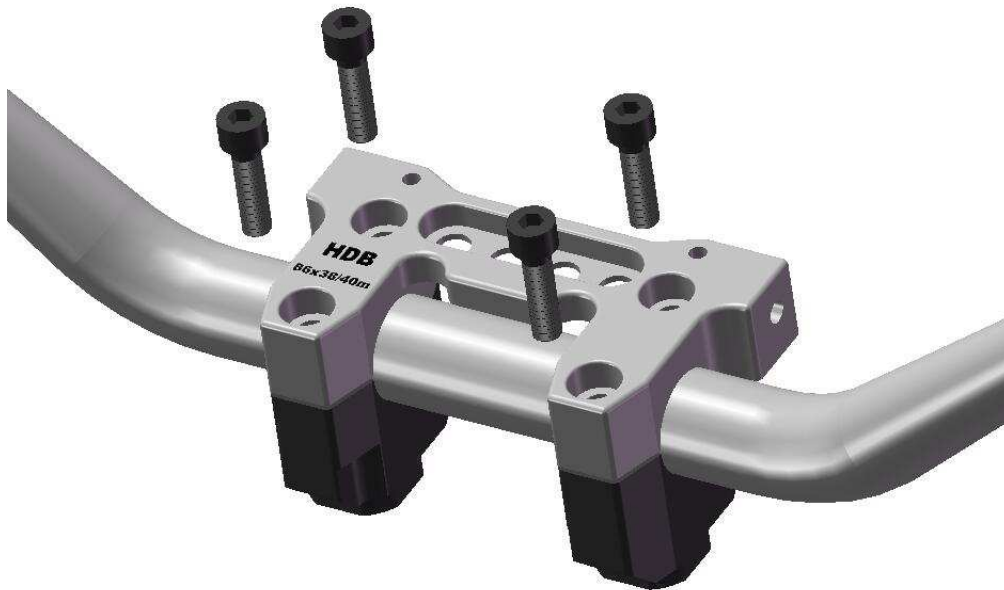
Handguard Install Tips

What you get in the set:

- 1 - HDB Top Clamp,
- 1 - set HDB Handguards,
- 2 - Swivel Bosses,
- 2 - Sets of Shields,
- 2 - Threaded Inserts,
- 1 - 5/8-11 tap
- 4 - 8mm x 35mm SHCS,
- 2 - 8mm x 30mm BHCS and washers,
- 2 - 8mm x 20mm BHCS and washers,
- 2 - 8mm x 30mm FHCS,
- 4 - 5mm x 16mm BHCS and washers,



1. If you have grips on your bars, remove them and prep the ends for handguards by trimming the ends out of both sides and also the throttle tube.
2. Tap the handlebar ends for threaded inserts, using a 11mm 12 point socket for the square end of the tap and WD-40 or equivalent for a lubricant, run the tap in up to the shrink tubing. For best results keep the centerlines of the tap and the bars aligned, if the taps binds, back it out blow out the shavings and continue to the shrink tubing.
3. Install the threaded insert until snug, over tightening could swell the throttle diameter irreversibly. When installed correctly the inserts should be completely inside and to a depth of 1/32 beyond the end of the bars. When the guards are bolted up, they should tighten to the bars and not the inserts.
4. Remove old top clamp and install HDB Top Clamp using the 4-8mm x 35mm SHCS (you might find it easier to attach the Computer Protector, Computer and Swivel Bosses before bolting Top Clamp to lower handlebar clamps).

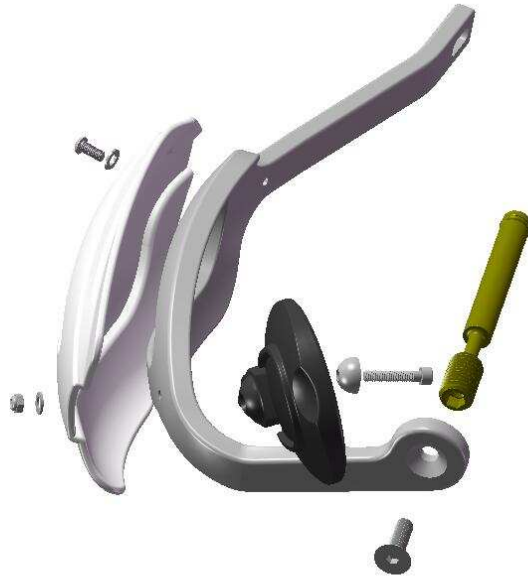


5. Attach Swivel Bosses to Top Clamp using the 2-8mm x 30mm BHCS and washers, tighten till snug then back off 1-2 turns.

6. Attach the swivel end of the Handguards to the Swivel Bosses using the 2-8mm x 20mm BHCS and washers, tighten till snug then back off 1-2 turns.



7. Attach the bar ends of the Handguards using the 2-8mm x 30mm FHCS and tighten in desired position. In some cases, because of the different bends and raises of bars, there will be a gap that will need to be tightened up.



8. Tighten all bolts.

9. Attach Shields using the 4-5mm x 16mm BHCS and washers. For best results, get both screws started before tightening.

10. Attach Mirror if included using the 5mm x 35mm SHCS, nut and washer. For best results, tighten the mirrors 5mm SHCS, then place the shield on the threads extending from the guards and get shields other BHCS started before tightening.